

M067 Slick 70"EP

Assembly Manual



Wing Span:70"/1778mm;	Flying Weight:3860-4210g;
Wing Area:63.3sq.dm;	Radio:4Channel 4Servos;
Length:66.3"/1684mm;	

CAUTION : this plane is not a toy and should be kept away children under 16 years of age! Before use , please carefully read this manual.

●First-time builders should seek advice from people having building experience in order to assemble the model correctly and to produce its performance to full extent .

●Assemble this kit only in places out of children's reach!

●Take enough safety precautions prior to operating this model.

You are responsible for this model's assembly and safe operation!

●Always keep this instruction manual ready at hand for quick reference,even after completing the assembly.



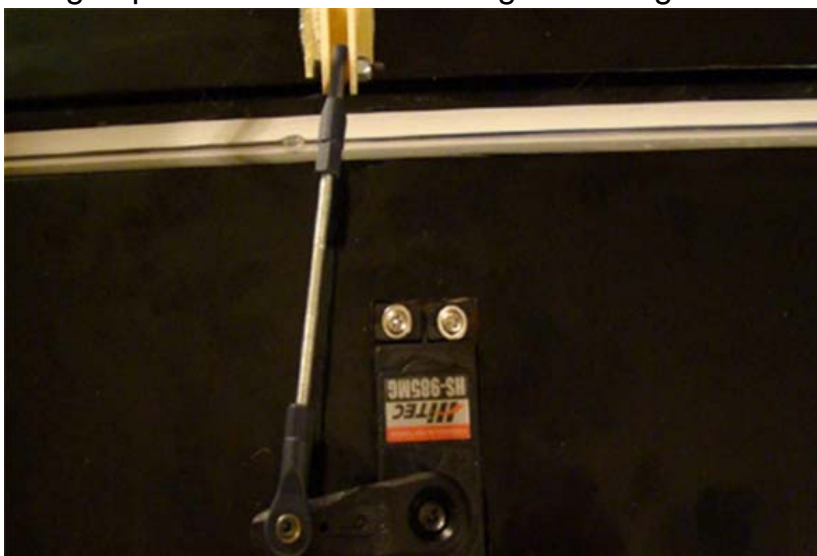
Remove the covering over the aileron servo openings and the aileron control horn slots as shown



Cut servo hole and Use epoxy to install aileron horns as shown



Attached servo extensions to aileron servos, Use the string install in the wing to pull the servo wire through the wing



Install the wheel onto the axles and secure with the wheel collars, as shown



Slide on wheel/axle assembly into a wheel pant, and install the wheel assembly on the landing gear leg, Tighten the locknut as shown to secure the assembly onto the gear leg



Repeat for other side, Install the wheel cover, and fix it up to landing gear with screw.



Fix up the landing gear on the fuselage bottom with 4 screws.



Put the cover board in the right position, then fix up it.



Install the tail landing gear Use screws to fix up the fuselage bottom.



Apply epoxy into hinge hole of the rudder
Use glue to fix up rudder horns.



Finished photo



Cut the servo holes on the profile of the fuselage



Install the rudder horns and connect servo with wire as shown.



Install the rudder servo, servo, and horn links with locking nuts as shown



Crimp the servo end of the cables first, the cables cross once inside the fuselage to form an "X"



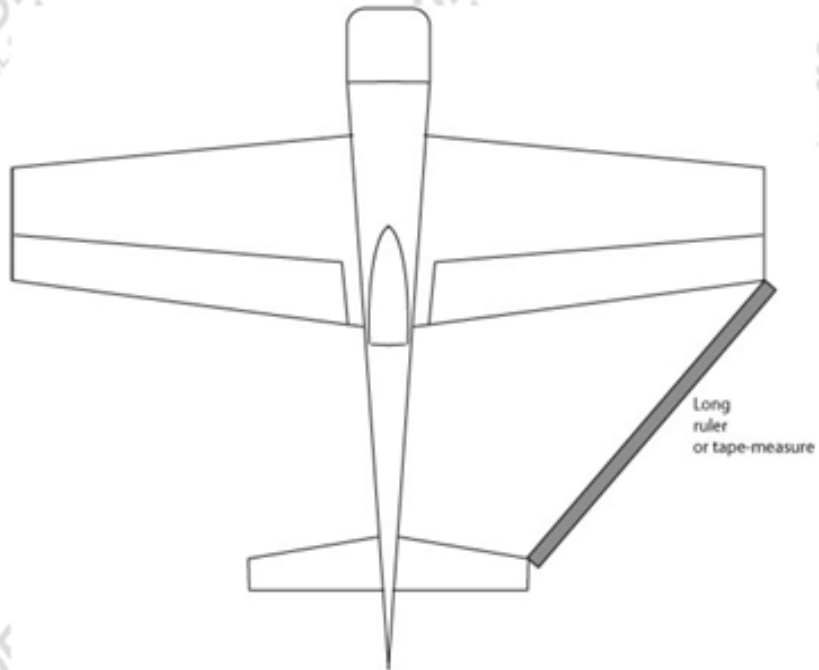
Another way of Install rudder servo..



Using a tape measure or long ruler, measure from the stab to the wing tips. in the diagram Equalize that measurement right and left to be sure your stab is aligned



Use a ruler to align the stab side-to-side.



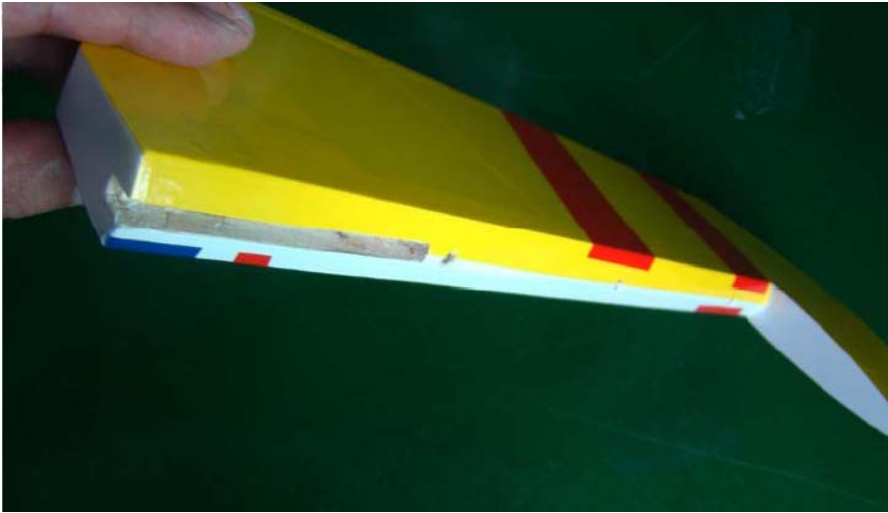
Drip thin glue onto the stab-to-fuselage joint top and bottom



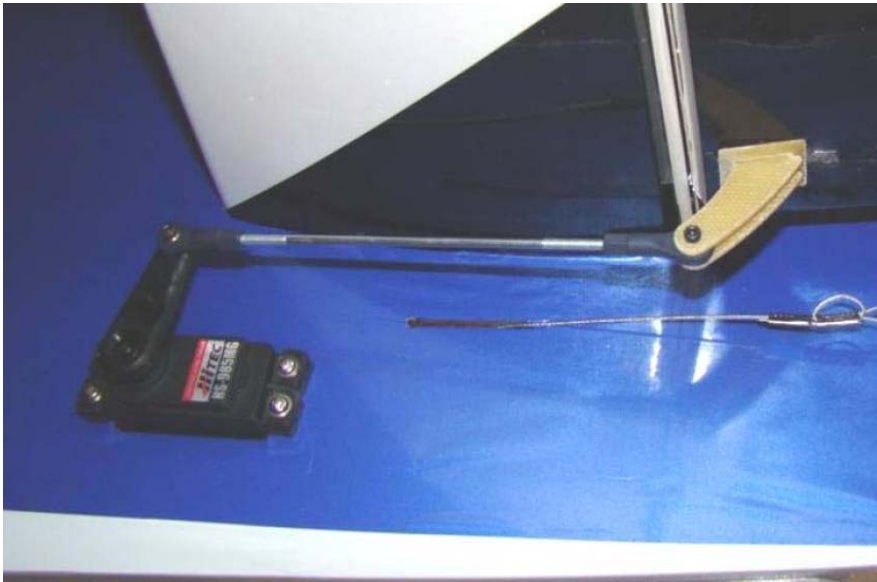
Hinge the elevators onto the horizontal stabilizer



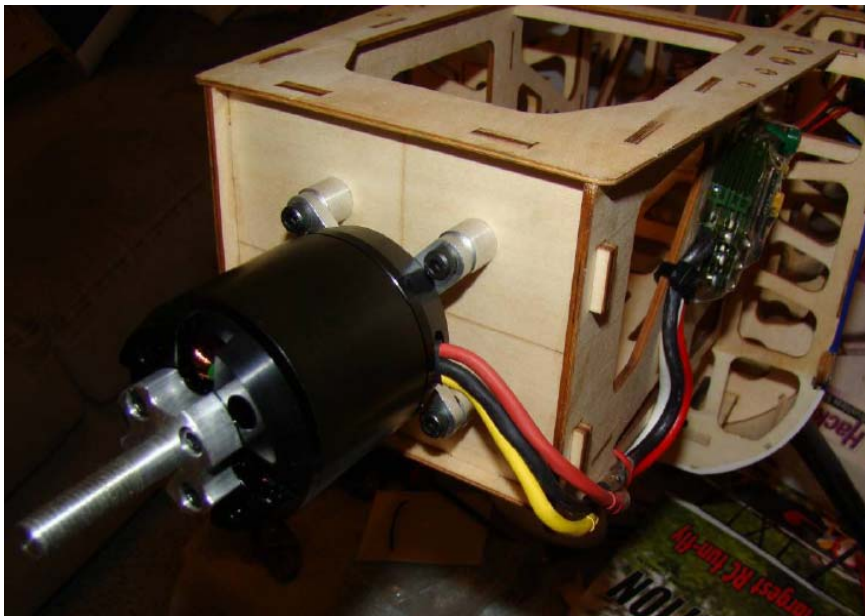
Install the elevator, Before installing the elevator with the slot which accepts the joiner, practice fitting it once, the joiner is very tight in the slot



Install elevator horn as shown, using the same technique as for the rudder horns



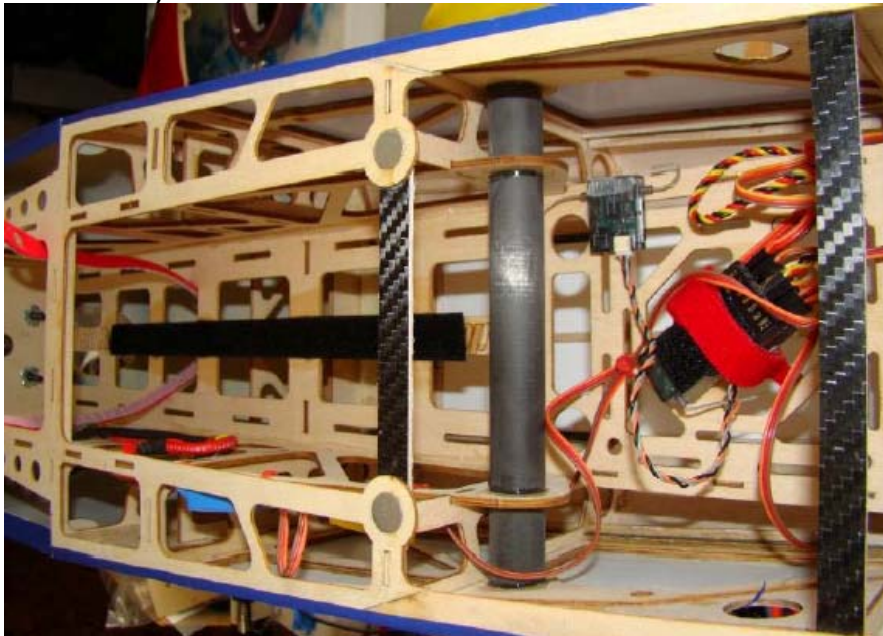
Install the motor as shown



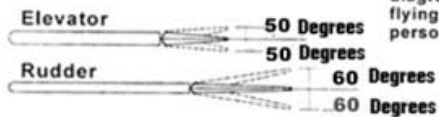
Drill a small hole, Fix the cowl with screw as the show.



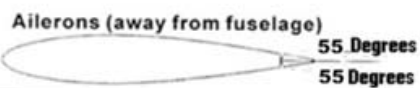
Apply one side of the self-adhesive velcro tape to the battery tray, for another to your battery use the Install your receiver as shown on the receiver tray



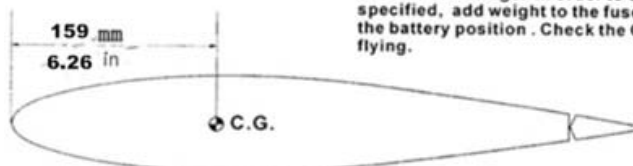
Control Throws



Adjust the control throws as shown in the diagram. These throws are good for general flying. You can adjust according to your personal preference.



C.G.



The ideal C.G. Position is 159mm/ 6.26 in behind the leading edge measured at where the wing meets the fuselage. In order to obtain the C.G. specified, add weight to the fuselage or move the battery position. Check the C.G. before flying.

THE FINISHED PHOTO



Another scheme for choice Dong Guang Flight Model CO.,Ltd

ADD:No.10,Fu Ning Street,Xian Xi Industrial,Chang An Town

DongGuan City,Guang Dong Province,China

Tel: +86-769-85070618 / +86-769-89790965

Fax: +86-769-85091868

E-mail:info@flight-model.com

Web: <http://www.flight-model.com>

<http://flight-model.preview.alibaba.com/>

Enjoy it